



**Red Hat**

**Zetlan Technologies..**

**RED HAT CERTIFIED SPECIALIST IN BUSINESS RULES**

*"Dive into the World of Open Source Excellence Today"*

**[www.zetlantech.com](http://www.zetlantech.com)**



### **Certification:**

The certification validates the skills and knowledge required to use Red Hat Decision Manager to develop and manage business rules in an enterprise environment.

**Target Audience:** It's aimed at developers, software engineers, and architects who work with business rules and want to demonstrate their expertise with Red Hat Decision Manager.  
**Prerequisites:** While there are no formal prerequisites for taking the certification exam, Red Hat recommends candidates have practical experience with Red Hat Decision Manager or JBoss BRMS (Business Rules Management System).

### **Exam:**

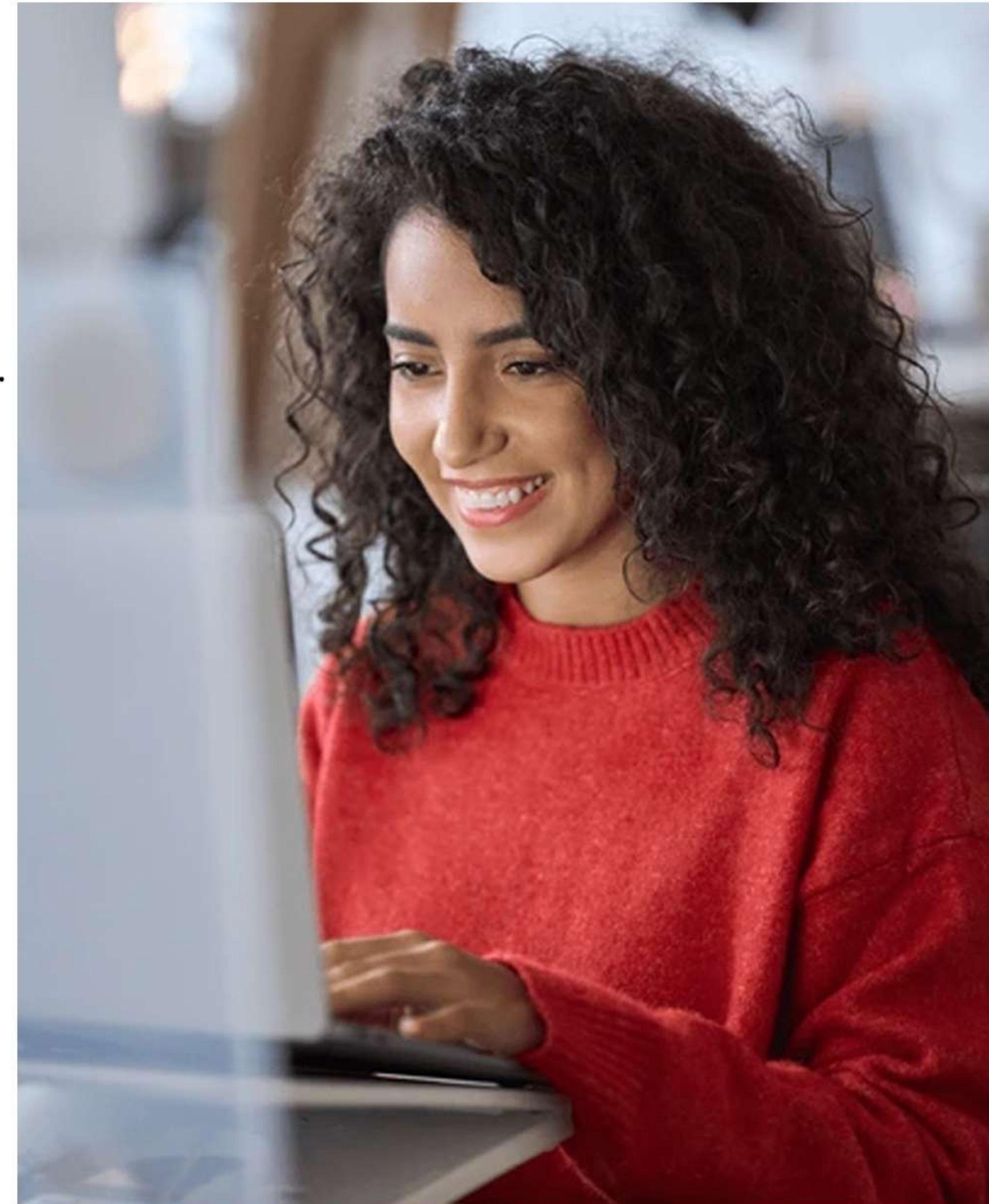
The certification exam typically assesses candidates' ability to perform tasks such as creating, managing, and deploying business rules using Red Hat Decision Manager. The format of the exam may include multiple-choice questions, hands-on lab exercises, and scenario-based questions.

### **Benefits:**

Achieving the Red Hat Certified Specialist in Business Rules certification can enhance a professional's credibility and marketability in the field of business rules management and enterprise decision-making.

### **Validity:**

Red Hat certifications usually have a validity period, after which certified professionals may need to renew their certification by passing a recertification exam or fulfilling other requirements.





# Course Modules



## Designing Business Rules

- Creating and using an intermediate drools model with associated facts
- Organizing rules and managing facts
- Understanding and using effective rule design patterns



## Authoring

- Basic rules
- Calendars
- Decision tables
- Rule templates
- DSL



## Conflict Resolution

- Prioritizing and ordering rule execution
- Grouping rules
- Using rule flow groups







## Session Management

- Building common object
- Stateless kie session
- Stateful kie session
- Adding, removing and updating facts



## Testing and Maintenance

- Creating effective test scenarios
- Identifying potential issues including poorly designed rules



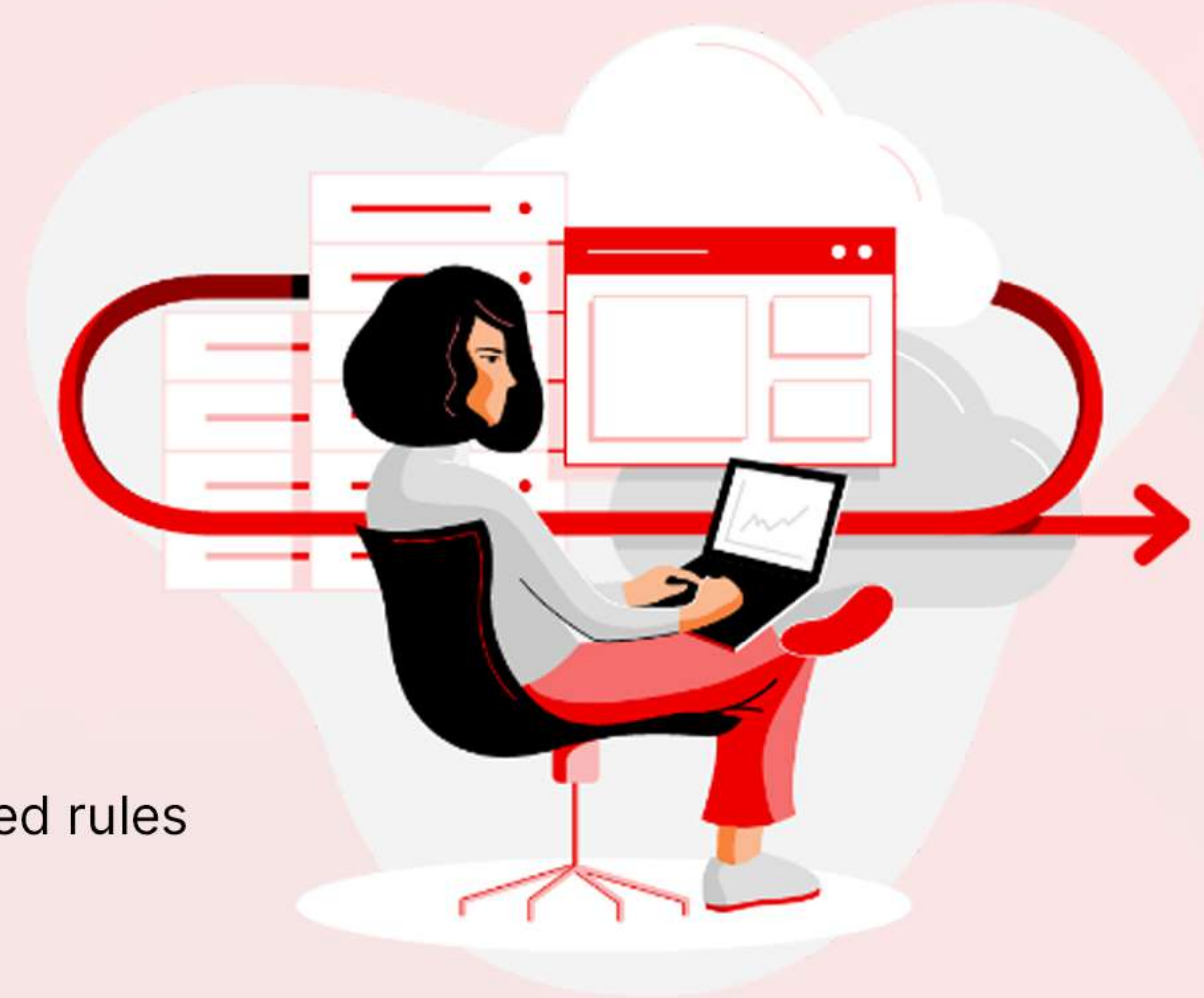
## Performance

- Understanding the impacts of different rule designs and implementations
- Identifying and avoiding common, inefficient results such as cartesian products



## Administration

- Deploying and managing rules
- Creating and using snapshots







# Red Hat

For more information, visit: [www.zetlantech.com](http://www.zetlantech.com)



For Contact: **+91 9600579474**  
**+91 8680961847**



Follow us on social  
media to get the most  
updated course information:



Youtube



Facebook



Instagram